



Berks Trail Challenge

May 1 to October 31



Reading Hospital

TOWER HEALTH

Advancing Health. Transforming Lives.

TRAIL	DIFFICULTY	TERRAIN	DISTANCE	LOCATION	SYMBOL (write or draw)
Reading Public Museum Arboretum	Easy	Paved Surface	1.2 miles Loop Trail	500 Museum Road Reading, PA 19611 <i>Start by the planetarium</i>	
Blue Marsh Tulpehocken Creek Loop	Moderate	Packed Earth Surface	2.2 miles Loop Trail	1230 Palisades Drive Leesport, PA 19533	
Nolde Forest Boulevard to Rock Outcrop	Moderate	Crushed Gravel Stone, Hills with Incline	2.2 miles Out and Back Trail	10 Sawmill Lane Reading, PA 19607 or Fire Gate #3 at 324 Oregon Road Mohnton, PA 19540	
Union Canal Trail	Moderate	Gravel Trail	9.5 Miles Out and Back Trail	Berks Leisure Area 1901 Tulpehocken Road Wyomissing, PA 19610	
Daniel Boone Homestead <i>*gates open 9 a.m. to 4 p.m.</i>	Moderate	Crushed Stone Trail	1.5 miles Loop Trail	400 Daniel Boone Road Birdsboro, PA 19508 <i>Starts at The DeTurk Education Building</i>	
Green Hills Preserve	Moderate	Varying Natural Pathways	3 miles Loop Trail	553 Gunhart Road Mohnton, PA 19540	
Your Park/Trail Name Here					
Your Park/Trail Name Here					

Please leave the trails better than you found them.

Berks Trail Challenge

May 1 to October 31



HOW MANY TRAILS CAN YOU EXPLORE BY OCTOBER 31?

1. Register as an individual or a family at TowerHealth.org/btc.
2. Plan a visit.
3. Record the unique symbol located at each trail.
4. Complete six of the eight trails to be entered to win a prize.
Return your challenge card via email or mail.

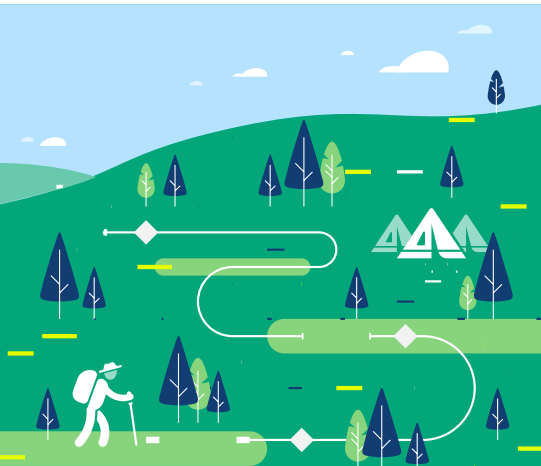
CONTACT INFORMATION

Name: _____

Age: _____

Address: _____

Email: _____



SUBMIT YOUR CHALLENGE CARD BY NOVEMBER 6.

- **Email:** CommunityWellness@towerhealth.org

- **US Mail (Must be postmarked by November 6):**

Reading Hospital
Attn: Community Wellness - A2S
PO Box 16052
West Reading, PA 19612



Reading Hospital

TOWER HEALTH

Advancing Health. Transforming Lives.

Please note: Incentives will not be distributed until after the completion of the challenge.